



SCUPPERS

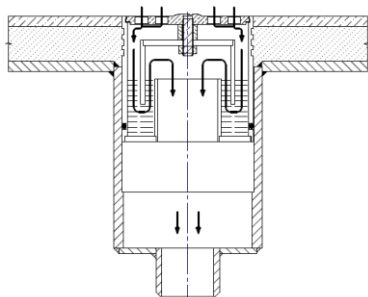
SCUPPER

Vertical outlet. For welding.

CHARACTERISTICS

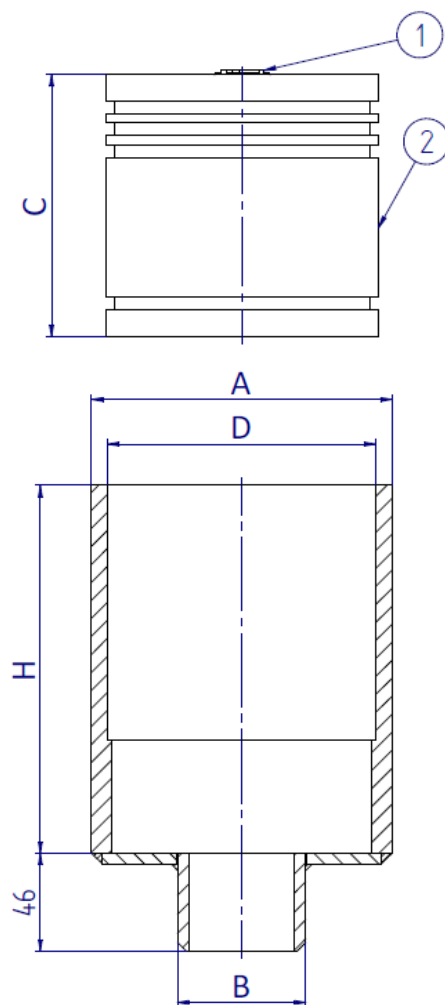
Design:

- ◆ Other materials are available.
- ◆ For special sizes with a higher "H" dimension than standard, special internal "C" heights can be offered.



◆ Typical assembly

N°	COMPONENT	MATERIAL
1	Grid	RG-5
		AISI 316
2	Body	PCV



MATERIALS AND DIMENSIONS

Reference		A	B	C	H			D	Material
					Standard	Special			
D-101-01	2"	141,3	60,3	120	124	160	202	126	Galvanised steel
D-101-02	1 1/2"	101,6	48,3	70	80	-		92	
				110	121	160			
D-101-03	2"	140	55	120	124	160	202	126,3	Aluminium 6060/6082
D-101-04	1 1/2"	100	50	70	80	-		92	
				110	120	160			
D-101-05	2"	140	55	120	124	202		126	Stainless Steel

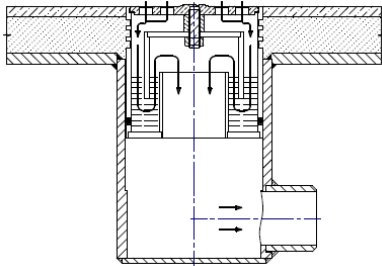
SCUPPER

Horizontal outlet. For welding.

CHARACTERISTICS

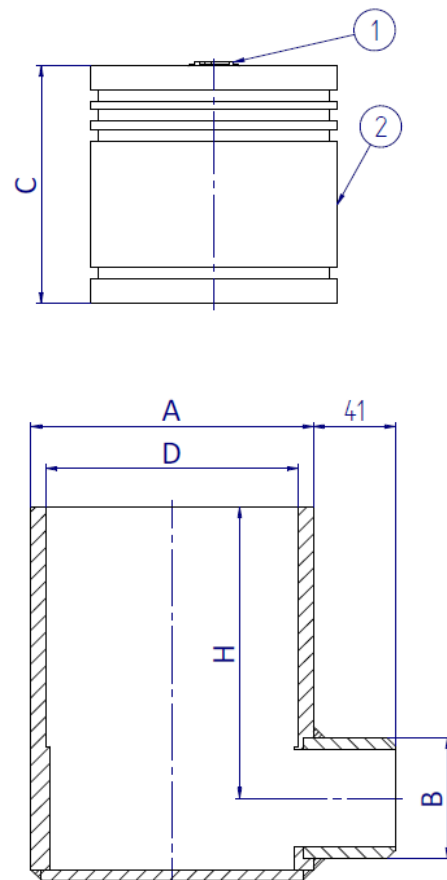
Design:

- ◆ Other materials are available.
- ◆ For special sizes with a higher "H" dimension than standard, special internal "C" heights can be offered.



◆ Typical assembly

N°	COMPONENT	MATERIAL
1	Grid	RG-5
		AISI 316
2	Body	PCV



MATERIALS AND DIMENSIONS

Reference		A	B	C	H			D	Material
					Standard	Special			
D-102-01	2"	141,3	60,3	120	116	160	191	126	Galvanised Steel
D-102-02	1 1/2"	101,6	48,3	110	102	150	182	92	
D-102-03	2"	140	55	120	116	160	191	126	Aluminium 6060/6082
D-102-04	1 1/2"	100	50	110	101	150	181	92	

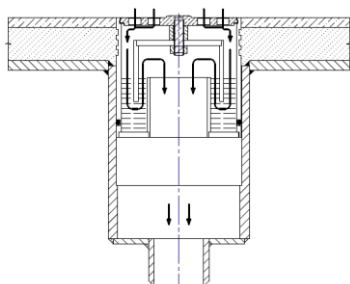
SCUPPER

Vertical outlet. For threading.

CHARACTERISTICS

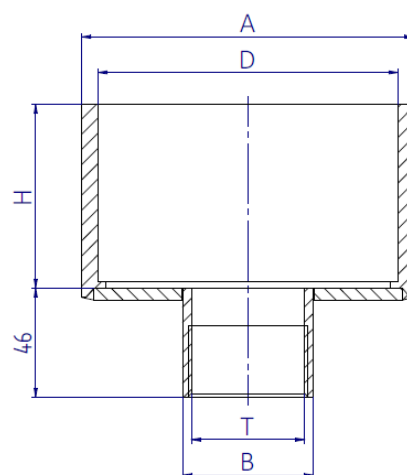
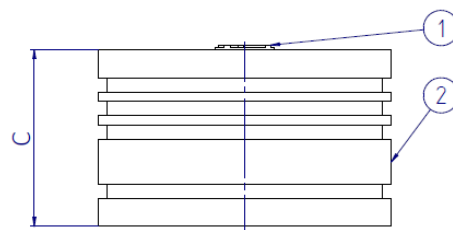
Design:

- ◆ Possibility of manufacturing in other materials and dimensions.



◆ Typical assembly

N°	COMPONENT	MATERIAL
1	Grid	RG-5
		AISI 316
2	Body	PCV



MATERIALS AND DIMENSIONS

Reference		A	B	T	C	H	D	Material
D-107-01	2"	140	55	G1 1/2"	75	80	126,5	Aluminium 6060/6082
D-107-02	2"	140	55	G1 1/4"	75	80	126,5	

SCUPPER

For shower.

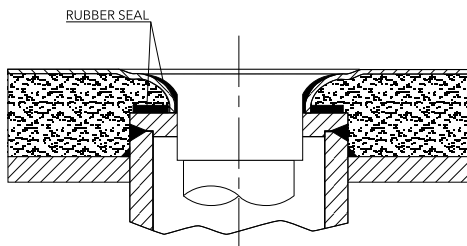
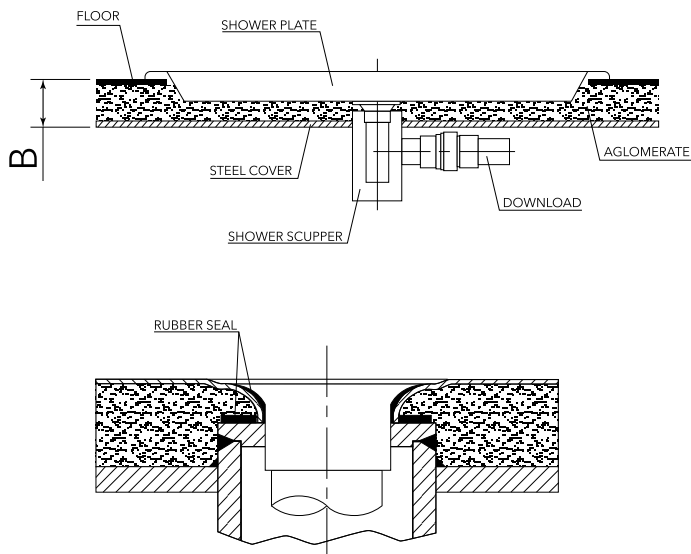
CHARACTERISTICS

Design:

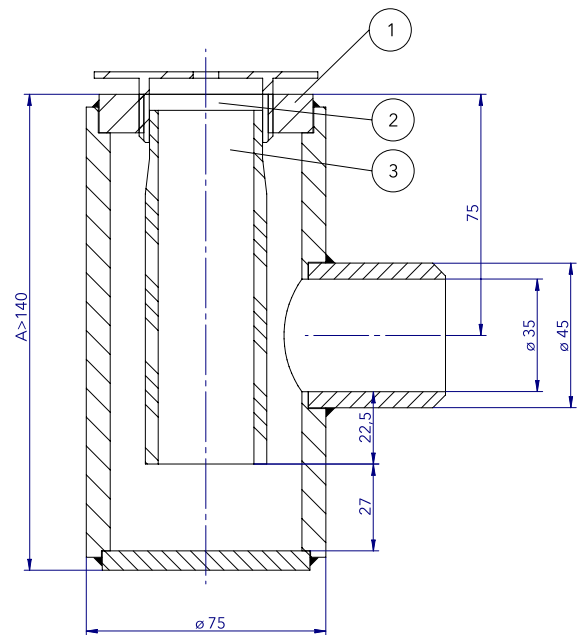
- ◆ Other materials and dimensions available

Notes:

- ◆ The dimension "A" depends on the thickness of the floor "B".



- ◆ Typical assembly



MATERIALS

REF.	COMPONENT	MATERIAL
1	Body	Galvanised steel
2	Nipple	Brass Chrome plated
3	Hydraulic seal tube	PVC